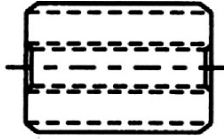




SOLID STEEL STOP SCREW

Note: When coolant-thru-the-tool is not necessary, these screws can also be used as a standard Backup or Adjusting Screw

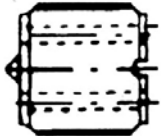


PART NUMBER	OLD PART NO.	THREAD SIZE
101-001	855-001	3/4-16 L.H.
101-002	855-002	13/16-16 L.H.
101-003	855-003	1-1/8-16 L.H.
101-004	855-004	1-1/4-12 L.H.
101-005	855-005	7/16-20 L.H.
101-006	855-006	5/8-18 L.H.
101-007	855-007	1-5/8-12 L.H.
101-008	855-008	1-3/8-12 L.H.
101-009	855-009	7/8-14 L.H.
101-010	855-010	15/16-16 L.H.
101-011	855-012	3/8-24 L.H.

PART NUMBER	OLD PART NO.	THREAD SIZE
101-012	855-013	9/16-18 L.H.
101-013	-	1-3/8-16 L.H.
101-014	-	1-5/8-16 L.H.
101-015	-	1-1/4-16 L.H.
101-016	-	7/16-16 L.H.
101-017	-	5/8-16 L.H.
101-018	-	9/16-16 L.H.
101-019	-	7/8-16 L.H.
101-020	-	11/16-16 L.H.
101-021	-	1/2-16 L.H.

ER SOLID STEEL COOLANT STYLE STOP SCREW

Note: When coolant-thru-the-tool is not necessary, these screws can also be used as a standard Backup or Adjusting Screw



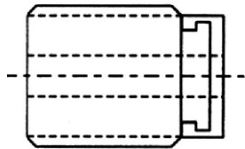
PART NUMBER	OLD PART NO.	THREAD SIZE
101-023	-	M12 x 1.75
101-024	-	M12 x 1.50
* 101-025	-	M12 x 1.75

PART NUMBER	OLD PART NO.	THREAD SIZE
* 101-026	-	M12 x 1.5
* 101-027	-	M12 x 2.0
* 101-028	-	M12 x 2.0

* Non-Coolant Solid

NYLON CAP STOP SCREW

Note: These screws are steel with a nylon cap to seal against the end of a recessed drill.

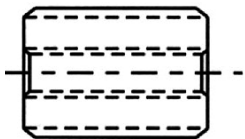


PART NUMBER	OLD PART NO.	THREAD SIZE
102-001	851-001	3/4-16 L.H.
102-002	851-002	13/16-16 L.H.
102-003	851-003	1-1/8-16 L.H.
102-004	851-004	1-1/4-12 L.H.
102-005	851-005	7/16-20 L.H.
102-006	851-006	5/8-18 L.H.

PART NUMBER	OLD PART NO.	THREAD SIZE
102-007	851-007	1-5/8-12 L.H.
102-008	851-008	1-3/8-12 L.H.
102-009	851-009	7/8-14 L.H.
102-010	851-010	15/16-16 L.H.
102-011	851-012	3/8-24 L.H.
102-012	851-013	9/16-18 L.H.

SOLID NYLON STOP SCREW

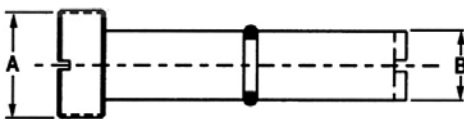
Note: These screws are solid teflon designed for leak-proof sealing of threads whenever minimum in and out adjustment is necessary.



PART NUMBER	OLD PART NO.	THREAD SIZE
103-001	851-101	3/4-16 L.H.
103-002	851-102	13/16-16 L.H.
103-003	851-103	1-1/8-16 L.H.
103-004	851-104	1-1/4-12 L.H.
103-005	851-105	7/16-20 L.H.
103-006	851-106	5/8-18 L.H.

PART NUMBER	OLD PART NO.	THREAD SIZE
103-007	851-107	1-5/8-12 L.H.
103-008	851-108	1-3/8-12 L.H.
103-009	851-109	7/8-14 L.H.
103-010	851-110	5/16-24 L.H.
103-011	851-111	15/1-16 L.H.
103-012	851-112	3/8-24 L.H.

END MILL HOLDER COOLANT STOP SCREW

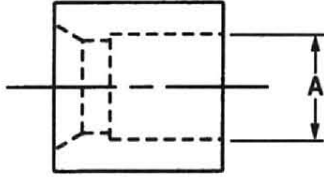


PART NO.	OLD PART NO.	(A) THREAD SIZE	B
105-001	854-001	1-1/8-12 L.H.	0.745
105-002	854-002	1-1/8-16 L.H.	0.745
105-003	854-003	3/4-10 R.H.	0.365
105-004	854-004	1-8 R.H.	0.490

PART NO.	OLD PART NO.	(A) THREAD SIZE	B
105-005	854-005	5/8-11 R.H.	0.365
105-006	854-006	M24X3 L.H.	0.490
105-007	854-008	M16X2 L.H.	0.365
105-010	-	1-8 R.H.	0.490



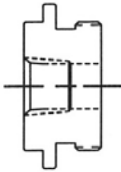
COOLANT SEAL ADAPTER



Note: These solid nylon adapters should be used for straight tools 15/64" or smaller for maximum leakage control.

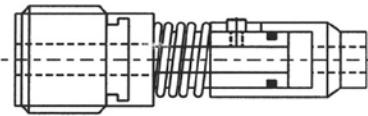
PART NUMBER	OLD PART NO.	A I.D.
107-001	853-001	0.125
107-002	853-002	0.140
107-003	853-003	0.156
107-004	853-004	0.171
107-005	853-005	0.187
107-006	853-006	0.203
107-007	853-007	0.218
107-008	853-008	0.234

REAR OIL FEED ADAPTERS



PART NUMBER	OLD PART NO.	SIZE
108-001	852-001	3/4-16 L.H.
108-002	852-002	13/16-16 L.H.
108-003	852-003	1-1/8-16 L.H.
108-004	852-004	1-1/4-12 L.H.
108-005	852-005	1-5/8-12 L.H.

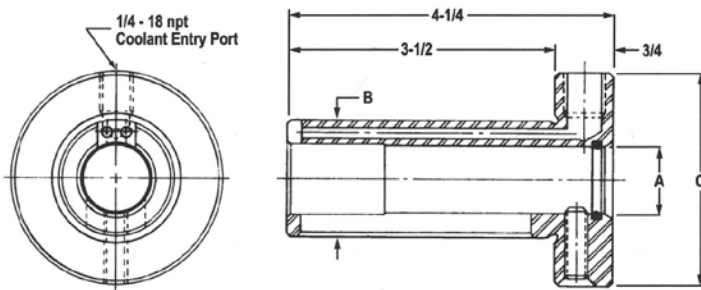
EXTENDED STOP SCREW FOR USE WITH END MILLS



Note: This stop screw must be used in conjunction with a non-pullout end mill collet to assure proper seal.

PART NUMBER	OLD PART NO.	THREAD	END MILL RANGE
109-001	600-001	1-1/8-16 L.H.	1/2-5/8
109-002	600-002	1-1/8-16 L.H.	3/4-1
109-003	600-003	1-5/8-16 L.H.	1/2-5/8
109-004	600-004	1-5/8-16 L.H.	3/4-1
109-005	600-005	1-5/8-16 L.H.	1-1/4 -1-1/2
109-006	600-006	1-1/4-12 L.H.	1-1/4 -1-1/2
109-007	600-007	1-3/8-12 L.H.	1-1/4 -1-1/2

COOLANT-FED LATHE BUSHING



Note: These coolant-fed lathe bushings adapt easily to any lathe, allowing the use of a variety of coolant-fed tooling in machines that currently lack rear entry coolant capabilities. The coolant enters thru a coolant entry port, travels parallel to the bushing and flows to the end of the cutting tool. (Most commonly used with spade drills and indexable drills.)

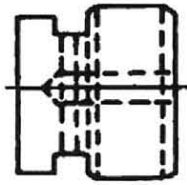
PART NUMBER	A	B	C
948-005	0.750	1.4995	2-3/4
948-010	0.875	1.4995	2-3/4
948-015	1.000	2.4995	3-3/8
948-020	1.000	1.9995	3-1/8
948-025	1.250	1.9995	3-1/8
948-030	1.250	2.4995	3-3/8
948-035	1.500	1.9995	3-3/8
948-040	1.500	2.4995	3-3/8
948-045	1.750	2.4995	3-7/8
948-050	2.000	2.4995	3-7/8

PART NUMBER	A	B	C
M948-005	0.7874 (20mm)	1.2593	2-3/4
M948-010	0.7874 (20mm)	1.4995	2-3/4
M948-015	0.9842 (25mm)	1.9995	3-1/8
M948-020	0.9842 (25mm)	2.4995	3-3/8
M948-025	1.2598 (32mm)	1.9680	3-1/8
M948-030	1.2598 (32mm)	1.9995	3-1/8
M948-035	1.2598 (32mm)	2.4995	3-3/8
M948-040	1.5748 (40mm)	1.9680	3-3/8
M948-045	1.5748 (40mm)	1.9995	3-3/8
M948-050	1.5748 (40mm)	2.4995	3-3/8
M948-055	1.9685 (50mm)	2.4995	3-7/8
M948-060	0.7874 (20mm)	1.2500	2-3/4

ACCESSORIES

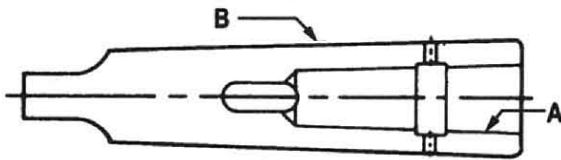


NYLON SEAL FOR JACOBS TAPER, DOUBLE ANGLE COLLET CHUCKS



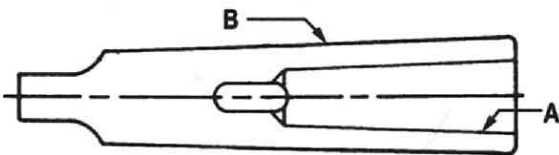
PART NUMBER	OLD PART NUMBER	DESCRIPTION
110-001	831-012	Fits JT2-DA10-CGS-2
110-002	831-013	Fits JT33-DA18-CGS-2

MORSE TAPER REDUCING SLEEVE WITH COOLANT CROSS HOLES



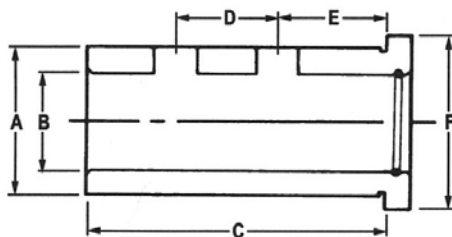
PART NUMBER	(A) INSIDE TAPER	(B) OUTSIDE TAPER
842-001	1	2
842-002	1	3
842-003	2	3
842-004	2	4
842-005	3	4
842-006	2	5
842-007	3	5
842-008	4	5

MORSE TAPER REDUCING SLEEVE WITHOUT COOLANT CROSS HOLES



PART NUMBER	(A) INSIDE TAPER	(B) OUTSIDE TAPER
843-001	3	4
843-002	3	5
843-003	4	5

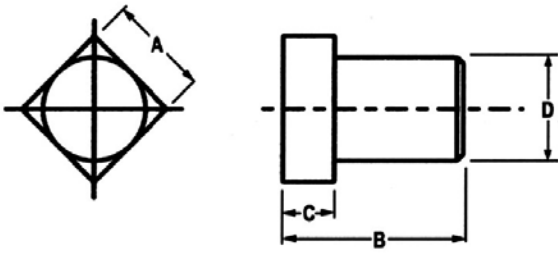
END MILL REDUCING COOLANT BUSHING



PART NUMBER	A	B	C	D	E	F
949-010	2	1-3/4	3-3/8	1-3/8	1-3/8	2-1/4
949-012	2	1-1/2	3-3/8	1-3/8	1-3/8	2-1/4
949-014	2	1-1/4	3-3/8	1-3/8	1-3/8	2-1/4
949-016	2	1.000	3-3/8	1-3/8	1-3/8	2-1/4
949-018	1-1/2	1-1/2	3	1-1/8	1	1-3/4
949-020	1-1/2	1.000	3	1-1/8	1	1-3/4
949-0787	1-1/4	0.787	3	1	1-1/8	1-5/8
949-0984	1-1/4	0.984	3	1	1-1/8	1-1/2
949-1259	1-1/2	1.259	3	1	1-1/8	2
949-1579	2	1.579	3-3/8	1-3/8	1-3/8	2-3/8
949-0748	1-1/4	0.748	3	1	1-1/8	1-1/2

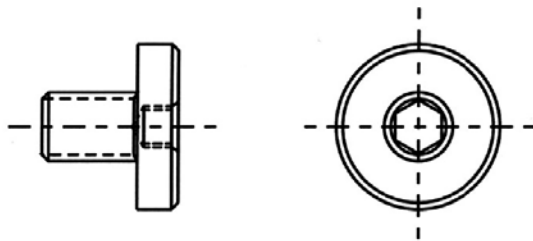


DRIVE KEYS FOR SHELL MILL HOLDERS



PART NUMBER	SIZE	A	B	C	D
201-001	0.500	0.250	0.50	0.12	0.2510
201-002	0.750	0.312	0.53	0.15	0.3135
201-003	1.000	0.375	0.68	0.18	0.3760
201-004	1.250	0.500	0.88	0.25	0.5010
201-005	1.500	0.625	1.06	0.31	0.6260
201-006	2.000	0.750	1.12	0.38	0.7510
201-007	2.500	1.000	1.38	0.50	1.0015

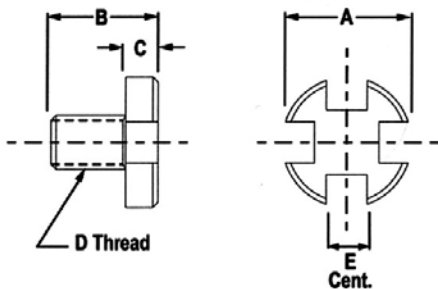
ARBOR SCREW FOR SHELL MILL HOLDERS



PART NUMBER	OLD PART NUMBER	PILOT DIA.	SIZE THREAD	OAL
200-001	959-001	0.50	1/4-28	0.75
200-002	959-002	0.75	3/8-24	0.94
200-003	959-003	1.00	1/2-20	1.12
* 200-004	959-103	1.00	1/2-20	1.87
200-005	959-004	1.25	5/8-18	1.25
* 200-006	959-104	1.25	5/8-18	2.00
200-007	959-005	1.50	3/4-16	1.50
* 200-008	959-105	1.50	3/4-16	2.00
200-009	959-006	2.00	1"-14	1.68
* 200-010	959-106	2.00	1"-14	2.18
200-011	959-007	2.50	1"-14 Head	3.12
* 200-012	959-107	2.50	1"-14 Head	2.18

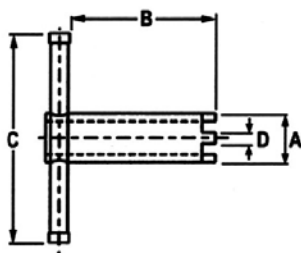
*Note: Longer length screws needed when Coolant Style Shell Mills are used with Non-Coolant Shell Mill Adapters.

SLOTTED CAP SCREWS FOR SHELL MILL ARBORS



PART NUMBER	OLD PART NO.	A	B	C	D	E
113-001	959-042	0.62	0.75	0.25	1/4-28	0.38
113-002	959-043	0.88	0.94	0.31	3/8-24	0.56
113-003	959-044	1.18	1.12	0.31	1/2-20	0.88
113-004	959-045	1.50	1.25	0.31	5/8-18	0.94
113-005	959-046	1.88	1.50	0.38	3/4-16	1.18
113-006	959-047	2.50	1.68	0.38	1-14	1.68
113-007	959-048	3.12	1.68	0.38	1-14	1.68

WRENCHES FOR SLOTTED CAP SCREWS

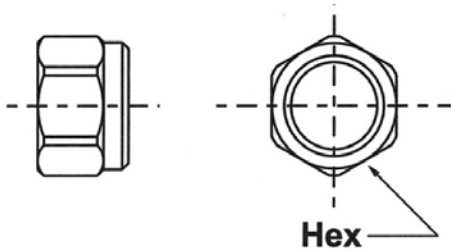


PART NUMBER	OLD PART NO.	A	B	C	D
114-001	959-049	0.62	2.25	4	0.18
114-002	959-050	0.88	2.03	5	0.25
114-003	959-051	1.18	2.18	6	0.31
114-004	959-052	1.50	2.38	7	0.38
114-005	959-053	1.88	2.50	7	0.50
114-006	959-054	2.50	2.50	7	0.62

ACCESSORIES

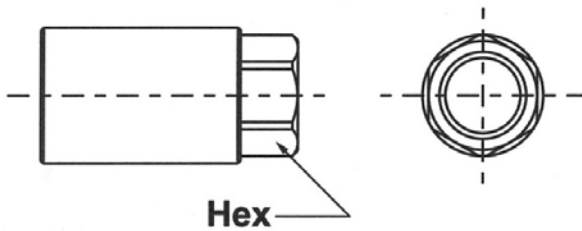


COMPRESSION NOSEPIECE FOR DOUBLE ANGLE COLLET CHUCKS



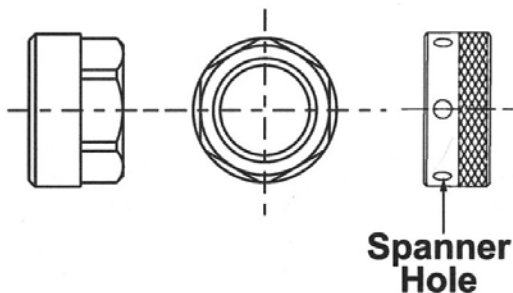
PART NUMBER	OLD PART NUMBER	SIZE
111-DA10	509-100	1-1/4 Hex
111-DA18	589-189	1-1/2 Hex

COMPRESSION NOSEPIECE FOR STRAIGHT SHANK COLLET EXTENSIONS



PART NUMBER	OLD PART NUMBER	SIZE
111-SDA30	961-539	1/2 Hex
111-SDA20	961-529	11/16 Hex
111-SDA10	961-509	7/8 Hex
111-SDA18	961-589	1-3/16 Hex

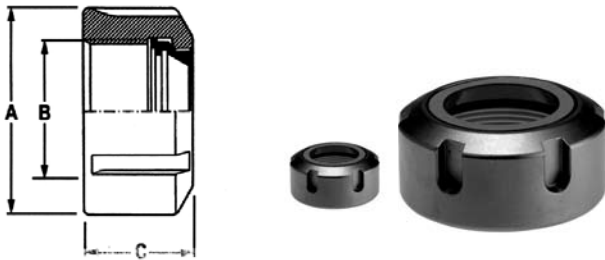
COMPRESSION NOSEPIECE FOR SINGLE ANGLE COLLET CHUCKS



PART NUMBER	OLD PART NUMBER	SIZE
111-TG10H	500-101	2-1/4 Hex
111-TG10S	500-100	2-1/2 Spanner
111-TG15S	550-150	3-1/2 Spanner

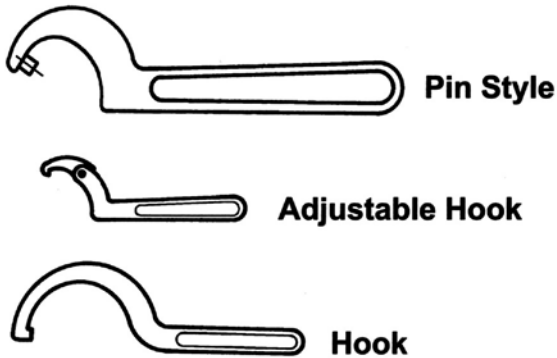


ER CLAMPING NUT



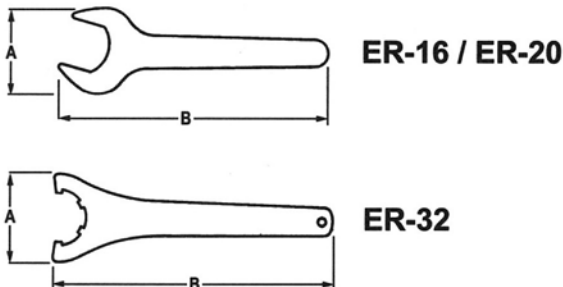
PART NUMBER	TYPE	A	B	C
115-015	ER 16	1.109	M22 X 1.5	0.672
115-016	ER 20	1.344	M25 X 1.5	0.750
115-017	ER 32	1.968	M40 X 1.5	0.875

SPANNER WRENCHES



PART NUMBER	OLD PART NUMBER	SIZE	STYLE
112-001	959-458	2-1/2	Pin
112-002	959-461	3-1/4	Pin
112-003	959-472	1-1/4 to 3	Adj. Hook
112-004	959-462	4-1/2	Pin
112-010	959-471	3/4 to 2	Adj. Hook
112-011	959-474	2 to 4-1/2	Adj. Hook

ER-WRENCH



PART NUMBER	TYPE	A	B
112-102	ER 16	1.656	5.500
112-103	ER 20	2.375	5.312
112-106	ER 32	2.937	9.875

ACCESSORIES



HIGH PRESSURE AIR-OPERATED PUMPING SYSTEM • COOLANT PRESSURE UP TO 1,000 PSI/COOLANT VOLUME UP TO 10 GPM

ADAPTABLE TO MOST MACHINES/HEAVY DUTY, STAIN RESISTANT CABINET

NEW



CFT MODEL 1000

- Easy to maintain
- Small 2' x 2' footprint
- 100% guaranteed performance
- Basic System Includes:
 - Pump
 - 110V AC Solenoid
 - Standard Length Air Inlet Hose and Fittings
 - Standard Length Low Pressure Coolant Inlet Hose, Fittings, and Sump Filter
 - Standard Length High Pressure Coolant Output Hose & Fittings
 - Dual 100 Mesh and 200 Mesh Filters
- Custom Length Hoses Available on Request
- Different Voltage Solenoids Available on Request



Visit our website at www.coolantfedtooling.com for technical information and our latest product offerings.



RETENTION KNOB SOCKETS



CAUTION: Retention knobs are manufactured to the specifications of the machine tool builder and any deviation from this could cause serious problems. Retention knobs are not normally interchangeable and failure to use the correct configuration can cause the toolholder to slip from the spindle which can result in serious damage. Retention knob fractures may occur from several factors, some of which are: improper knob configuration, mis-aligned machines, metal fatigue due to use, dropped tools, over torquing etc. Unless parts are ordered to a specific drawing or catalog number, we suggest you furnish a drawing of the part, make model number and serial number of the equipment requiring the knob.

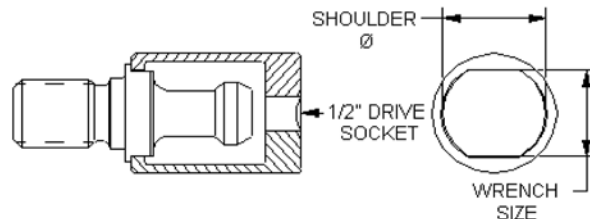
EXPANDED

RETENTION KNOB SOCKETS		
PART NUMBER	MAXIMUM FLAT (IN.)	MAXIMUM TORQUE FT-LB
•WRKS30	0.535	40
•WRKS30M	0.511	40
•WRKS30D	0.556	40
WRKS40	0.755	85
WRKS40M	0.711	85
WRKS45	1.004	100
WRKS45M	0.950	100
WRKS50	1.255	110
WRKS50M	1.185	110

• Note: WRKS30, WRKS30M and WRKS30D are 3/8" Drive Sockets

Read carefully when selecting a Socket.

- LIFE TIME GUARANTEE
- MADE IN THE USA
- SAVES TIME
- SOCKETS HAVE 1/2" DRIVE
- IDEAL TIGHTNESS IS ACHIEVED



Sockets aid in the installation and removal of Retention Knobs. Ideal tightness is achieved, without rounding off the corners of the Retention Knob.

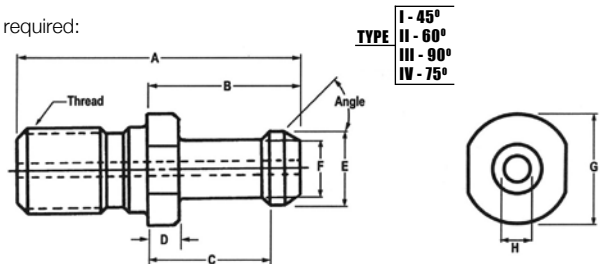
Note: Some Retention Knobs have mixed standards. Check the shoulder and Wrench Sizes carefully when selecting a Socket to fit other Retention Knobs not listed above.

RETENTION KNOBS, SPECIAL ORDERS

When ordering retention knobs not shown in the above listings, the following information is required:

1. Machine tool manufacturer
2. Model number and serial number
3. Sample retention knob (if available)
4. Drawing complete with critical dimensions as shown in the sample sketch.

Note: This sketch of a Japanese style knob can be used for reference when requesting quotations of identifying knobs, all dimension shown are critical for proper fit.



Visit our website at www.coolantfedtooling.com for technical information and our latest product offerings.

LIABILITY

Any warranty implied by law, including warranties of merchantability or fitness for a particular purpose, are hereby disclaimed and excluded. No representative or person is authorized to give any other warranty or to assume for The George Whalley Company. The George Whalley Company will not be liable for any incidental or consequential damages. The products illustrated in this catalog are protected by United States and foreign patents, patents pending, and applied for. We have attempted to publish this catalog error free, however, we recommend inspection of tool dimensions prior to use. In addition, dimensions shown reflect current manufacturing standards and The George Whalley Company reserves the right to make changes, without notice, to incorporate design improvements.

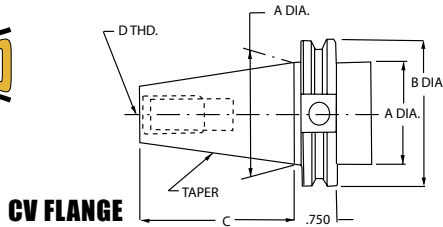
WARNING: CUTTING TOOLS MAY SHATTER! ALWAYS WEAR EYE PROTECTION IN THE AREA OF THEIR USE.

ACCESSORIES



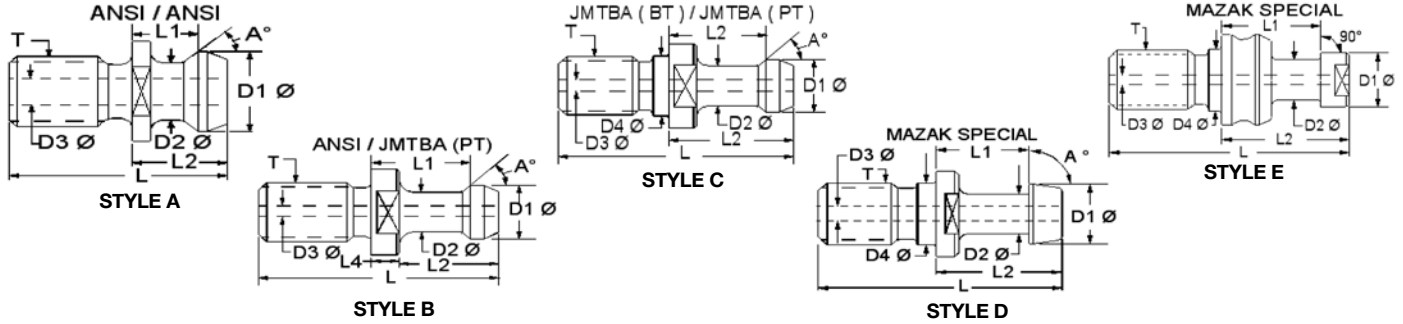
CV FLANGE RETENTION KNOBS

EXPANDED



CV FLANGE SHANK DIMENSIONS

TAPER	A	B	C	D
30	1.250	1.812	1.875	1/2-13
40	1.750	2.500	2.687	5/8-11
45	2.250	3.250	3.250	3/4-10
50	2.750	3.875	4.000	1-8
60	4.250	5.500	6.375	1 1/4-7



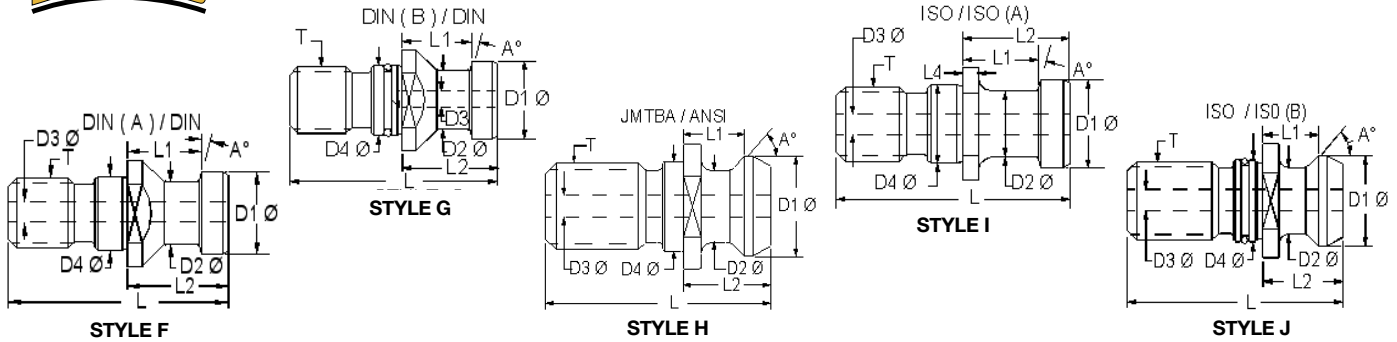
GW NO.	DESCRIPTION	STYLE	T	A	D1	D2	D3	D4	L	L1	L2	SOCKET
CV-30												
TOOL SHANK CV-30												
WRK11111	30E-A-P / A-45-.320C	H	0.500-13	45	0.5200	0.3850	0.1870	0.5120	1.2720	0.3200	0.4600	WRKS30
CV-40												
TOOL SHANK CV-40												
WRK11122	40E-A / A-45-.440(C.281)	H	0.625-11	45	0.7400	0.4900	0.2810	0.6360	1.6250	0.4400	0.6400	WRKS40
WRK11123	40E-A / A-45-.440	H	0.625-11	45	0.7400	0.4900	N/A	0.6360	1.6250	0.4400	0.6400	WRKS40
WRK11314	BOSTON DIGITAL	SPEC	0.625-11	15	0.5000	0.3100	N/A	N/A	1.5000	0.5930	0.7500	N/A
WRK12622	40E-A / PT-45-1.000	A	0.625-11	45	0.5880	0.3920	N/A	N/A	2.2650	1.0000	1.2650	WRKS40M
WRK17122	40E-A / PT-45-1.139	A	0.625-11	45	0.5940	0.4060	N/A	N/A	2.2500	1.1390	1.4380	WRKS40M
WRK17123	40E-A / PT-45-1.139(C.157)	A	0.625-11	45	0.5940	0.4060	0.1570	N/A	2.2500	1.1390	1.4380	WRKS40
WRK31114	40E-BT (A) / PT-45-.988	C	0.625-11	45	0.5890	0.3920	N/A	0.6360	2.2500	0.9880	1.2640	WRKS40
WRK31114A	40E-BT (A) / PT-60-.988	C	0.625-11	60	0.5890	0.3920	N/A	0.6360	2.2500	0.9880	1.2640	WRKS40
WRK31114B	40E-BT (A) / PT-90-.988	C	0.625-11	90	0.5890	0.3920	N/A	0.6360	2.2500	0.9880	1.2640	WRKS40
WRK31114B-P	40E-A / PT-90-.988	B	0.625-11	90	0.5890	0.3920	N/A	N/A	2.1250	0.9880	1.2640	WRKS40
WRK31222	40E-BT / SP-90-.777	D	0.625-11	90	0.5890	0.3880	N/A	0.6250	2.0370	0.7770	1.0530	WRKS40
WRK31226	40E (A) / A-45-.440(C.281)	H	0.625-11	45	0.7400	0.4900	0.2810	0.6405	1.6240	0.4400	0.6400	WRKS40
WRK31226-H	40E (A) / A-45-.440	H	0.625-11	45	0.7400	0.4900	N/A	0.6405	1.6240	0.4400	0.6400	WRKS40
WRK31514	40E-BT (A) / PT-45-.988(C.200)	C	0.625-11	45	0.5890	0.3920	0.2000	0.6360	2.2500	0.9880	1.2640	WRKS40
WRK31614	40E-A (A) / PT-45-.7066(C.079)	A	0.625-11	45	0.4310	0.2740	0.0790	N/A	1.8890	0.7066	0.9035	WRKS40
WRK31616	40E-A / I(A)-15-.792	I	0.625-11	15	0.7460	0.5490	N/A	0.6406	2.0080	0.7920	1.0280	WRKS40
WRK31617	40E-A (A)-O / I(A)-15-.792(C.236)	I	0.625-11	15	0.7460	0.5490	0.2360	0.6406	2.0080	0.7920	1.0280	WRKS40
WRK31814A	40E-BT / PT-60-.988(C.138)	C	0.625-11	60	0.5890	0.3920	0.1380	0.6360	2.2500	0.9880	1.2640	WRKS40
WRK32114	40E-A / .124 / PT-45-.988	C	0.625-11	45	0.5880	0.3920	0.6360	0.6360	2.1250	0.9880	1.2640	WRKS40
WRK32114A	40E-A / .124 / PT-60-.988	C	0.625-11	60	0.5880	0.3920	0.6360	0.6360	2.1250	0.9880	1.2640	WRKS40
WRK32114B	40E-A / .124 / PT-90-.988	C	0.625-11	90	0.5880	0.3920	0.6360	0.6360	2.1250	0.9880	1.2640	WRKS40
WRK32114-C	40E-A / .124 / PT-45-.988(C.187)	C	0.625-11	45	0.5880	0.3920	0.1870	0.6360	2.1240	0.9880	1.2640	WRKS40
WRK32130	40E-A-OP / .124 / PT-45-.988(C.187)-OID	C	0.625-11	45	0.5880	0.3920	0.1870	0.6406	2.1240	0.9880	1.2640	WRKS40
WRK32414B	40E-BT / PT-90-.707	C	0.625-11	90	0.5890	0.3920	N/A	0.6360	1.9700	0.7070	0.9840	WRKS40
* WRK32716	40E-A-OP / A-45-.440(C.160)	J	0.625-11	45	0.7400	0.4900	0.1600	0.6406	1.6240	0.4400	0.6400	WRKS40
** WRK32750	40E-A-OP / A-45-.440(C.160)	J	0.625-11	45	0.7400	0.4900	0.1600	0.6406	1.6240	0.4400	0.6400	WRKS40
WRK32751	40E-BT / PT-60-.481	H	0.625-11	60	0.5880	0.3920	N/A	0.6406	1.7320	0.4810	0.7570	WRKS40
WRK32914	40E-BT (BT) / I(A)-15-.9035(C.281)	I	0.625-11	15	0.7460	0.5490	0.2810	0.6406	2.1260	0.9035	1.1397	WRKS40
WRK35030	40E-BT(A) / PT-90-.988(C224)	C	0.625-11	90	0.5890	0.3920	0.2240	0.6406	2.2500	0.9880	1.2640	WRKS40
WRK51025	40E-I (A) / I(B)-45-.433(C281)	H	0.625-11	45	0.7400	0.5040	0.2810	0.6406	1.7579	0.4389	0.6456	WRKS40
WRK71123	40E-A / D(A)-15-.7874(C.236)	F	0.625-11	15	0.7470	0.5490	0.2360	0.6406	2.0040	0.7874	1.0240	WRKS40
WRK71125	40E-A / D(A)-15-.7874	F	0.625-11	15	0.7470	0.5490	N/A	0.6406	2.0040	0.7874	1.0240	WRKS40
WRK75022	40E-A / D(A)-15-.7874(C.236)-O	F	0.625-11	15	0.7470	0.5490	0.2360	0.6406	1.8800	0.7874	1.0240	WRKS40

* 8mm Counterbore on inside of thread stud.
 ** 6mm Counterbore on inside of thread stud.



CV FLANGE RETENTION KNOBS

EXPANDED



GW NO.	SMART DESCRIPTION	STYLE	T	A	D1	D2	D3	D4	L	L1	L2	SOCKET
CV-45												
TOOL SHANK CT-45												
WRK11133	45E-A / A-45-.580(C.375)	H	0.750-10	45	0.9400	0.6050	0.3750	0.7610	1.9720	0.5800	0.8200	WRKS45
WRK11135	45E-A / A-45-.580	H	0.750-10	45	0.9400	0.6050	N/A	0.7610	1.9720	0.5800	0.8200	WRKS45
¹ WRK17136	45E-A / S-90-1.000	E	0.750-10	90	0.8120	0.5620	N/A	N/A	2.1200	1.0000	1.2000	N/A
WRK31116	45E-BT / BT-45-1.228	C	0.750-10	45	0.7460	0.5490	N/A	0.7610	2.7700	1.2280	1.5830	WRKS45
WRK31116A	45E-BT / BT-60-1.228	C	0.750-10	60	0.7460	0.5490	N/A	0.7610	2.7700	1.2280	1.5830	WRKS45
WRK31116B	45E-BT / BT-90-1.228	C	0.750-10	90	0.7460	0.5490	N/A	0.7610	2.7700	1.2280	1.5830	WRKS45
WRK71134	45E-A / D(A)-15-.906(C.375)	F	0.750-10	15	0.9040	0.6670	0.3750	0.7610	2.1700	0.9055	1.1810	WRKS45M
WRK71136	45E-A / D(A)-15-.906	F	0.750-10	15	0.9040	0.6670	N/A	0.7610	2.1700	0.9055	1.1810	WRKS45M
CV-50												
TOOL SHANK CV-50												
WRK11143	50E-A / A-45-.700(C.500)	H	1.000-8	45	1.1400	0.8200	0.5000	1.0260	2.5750	0.7000	1.0000	WRKS50
WRK11144	50E-A / A-45-.700(C.468)	H	1.000-8	45	1.1400	0.8200	0.4680	1.0260	2.5750	0.7000	1.0000	WRKS50
WRK11146	50E-A / A-45-.700	H	1.000-8	45	1.1400	0.8200	N/A	1.0260	2.5750	0.7000	1.0000	WRKS50
WRK13744	50E-A / SP-40-1.025	LUCAS	1.000-8	40	0.8480	0.4980	N/A	N/A	2.9600	1.0250	1.5500	N/A
WRK17144	50E-A / A-45-.700(C.468)	A	1.000-8	45	1.1400	0.8200	0.4680	N/A	2.3000	0.7000	1.0000	WRKS50M
WRK31118	50E-BT / PT-45-1.384	C	1.000-8	45	0.9030	0.6680	N/A	1.0260	3.3500	1.3840	1.7780	WRKS50
WRK31118A	50E-BT / PT-60-1.384	C	1.000-8	60	0.9030	0.6680	N/A	1.0260	3.3500	1.3840	1.7780	WRKS50
WRK31118B	50E-BT / PT-90-1.384	C	1.000-8	90	0.9030	0.6680	N/A	1.0260	3.3500	1.3840	1.7780	WRKS50
WRK31118B-P	50E-A / PT-90-1.384	B	1.000-8	90	0.9030	0.6680	N/A	N/A	3.0800	1.3840	1.7780	WRKS50
WRK31118D	50E-A / PT-45-1.384(C.312)	C	1.000-8	45	0.9030	0.6680	0.3120	1.0260	3.0800	1.3840	1.7780	WRKS50
WRK31138A	50E-BT / PT-60-1.376	C	1.000-8	60	0.9030	0.6680	N/A	1.0260	3.3530	1.3760	1.7700	WRKS50
WRK31244A	50E-BT / M2-90-1.384	E	1.000-8	90	0.9080	0.6680	N/A	1.0260	3.3500	1.3840	1.7790	WRKSS40
WRK31246	50E-BT / A-45-.700(C.390)-OF	H	1.000-8	45	1.1400	0.8200	0.3900	1.0260	2.3000	0.7000	1.0000	WRKS50M
WRK31251A	50E-A / A-45-.700(C.390)-OID	H	1.000-8	45	1.1400	0.8200	0.3900	1.0303	2.3030	0.7000	1.0000	WRKS50M
WRK31645	50E-BT / PT-45-1.384(C.390)	C	1.000-8	45	0.9030	0.6680	0.3900	1.0260	3.3550	1.3840	1.7780	WRKS50
WRK31647	50E-BT-OP / PT-45-1.384(C.236)	C	1.000-8	45	0.9030	0.6680	0.2360	1.0260	3.3550	1.3840	1.7780	WRKS50
WRK31647H	50E-BT-OP / PT-45-1.384(C.236)-OID	C	1.000-8	45	0.9030	0.6680	0.2360	1.0260	3.3550	1.3840	1.7780	WRKS50
WRK31844A	50E-BT / PT-60-1.384(C.335)	C	1.000-8	60	0.9030	0.6680	0.3350	1.0260	3.3550	1.3840	1.7780	WRKS50
WRK32129	50E-BT-OP / PT-90-1.384(C.118)-O	C	1.000-8	90	0.9030	0.6680	0.2360	1.0260	3.3530	1.3840	1.7780	WRKS50
WRK32418B	50E-A / PT-90-903	B	1.000-8	90	0.9420	0.7060	N/A	N/A	2.5190	0.9030	1.2180	WRKS50M
WRK32419B	50E-A / PT-90-.903(C.250)	B	1.000-8	90	0.9420	0.7060	0.2500	N/A	2.5190	0.9030	1.2180	WRKS50M
WRK32420B	50E-A / PT-90-.903(C.315)	B	1.000-8	90	0.9420	0.7060	0.3150	N/A	2.5190	0.9030	1.2180	WRKS50M
WRK32749	50E-A-OP / PT-60-1.384(C.236)	C	1.000-8	60	0.9030	0.6680	0.2360	1.0232	3.3530	1.3840	1.7780	WRKS50
WRK34218B	50E-BT / PT-90-1.384(C.250)	C	1.000-8	90	0.9030	0.6680	0.2500	1.0260	3.3500	1.3840	1.7780	WRKS50
WRK51041(86)	50E-A / (A)-15-.9901	I	1.000-8	15	1.1000	0.8250	N/A	1.0301	2.9110	0.9822	1.3365	WRKS50
WRK51047	50E-A / (B)-45-.7069(C.468)	I	1.000-8	45	1.1400	0.7660	0.4680	N/A	2.5839	0.7069	1.0049	WRKS50
WRK51644	50E-A / SP-.141R-1.260	SPECIAL	1.000-8	.141R	0.7850	0.6310	N/A	N/A	2.8610	1.2659	1.5609	N/A
WRK51648	50E-A / SP-.141R-2.260	SPECIAL	1.000-8	.141R	0.7850	0.6310	N/A	N/A	3.8610	2.2659	2.5609	N/A
WRK71145	50E-A / D(A)-15-.984(C.468)	F	1.000-8	15	1.1010	0.8250	0.4680	1.0301	2.9140	0.9840	1.3380	WRKS50M
WRK71147	50E-A / D(A)-15-.984	F	1.000-8	15	1.1010	0.8250	N/A	1.0301	2.9140	0.9840	1.3380	WRKS50M
CV-60												
TOOL SHANK CV-60												
WRK11155	60E-A / A-45-1.080(C.500)	A	1.250-7	45	1.4600	1.0450	0.5000	N/A	3.2000	1.0800	1.5000	N/A

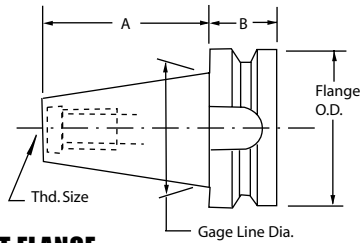
• ¹ Manufactured without Pilot.

ACCESSORIES



BT FLANGE RETENTION KNOBS

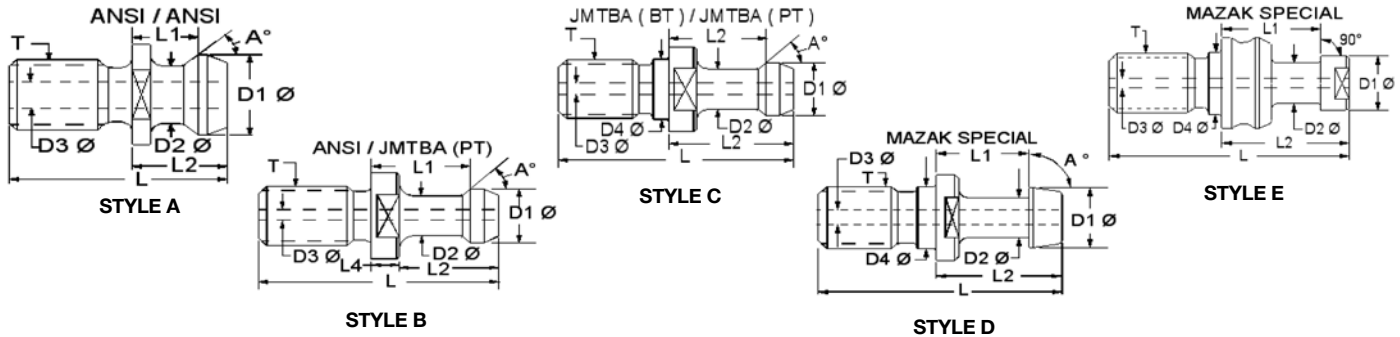
EXPANDED



BT FLANGE

BT FLANGE SHANK DIMENSIONS

TAPER	GAGE LINE	A LG.	B LG.	FLANGE O.D.	THD. SIZE
30	1.250	1.985	0.787	1.811	M12 X 1.75
35	1.500	2.299	0.866	2.087	M12 X 1.75
40	1.750	2.654	0.984	2.480	M16 x 2.00
45	2.250	3.378	1.181	3.346	M20 x 2.50
50	2.750	4.126	1.378	3.937	M24 x 3.00

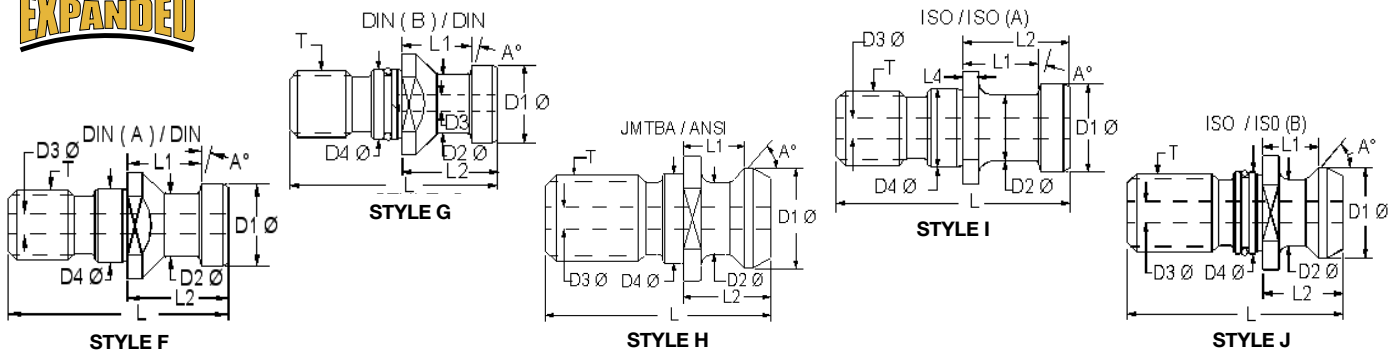


GW NO.	DESCRIPTION	STYLE	T	A	D1	D2	D3	D4	L	L1	L2	SOCKET	
BT-30													
TOOL SHANK BT-30													
WRK31109	30M-BT / PT-45-.707	C	M12X1.75	45	0.4310	0.2740	N/A	0.4918	1.6900	0.7070	0.9040	WRKS30M	
WRK31109A	30M-BT / PT-60-.707	C	M12X1.75	60	0.4310	0.2740	N/A	0.4918	1.6900	0.7070	0.9040	WRKS30M	
WRK31109B	30M-BT / PT-90-.707	C	M12X1.75	90	0.4310	0.2740	N/A	0.4918	1.6900	0.7070	0.9040	WRKS30M	
WRK31109C	30M-BT / PT-45-.707(C.110)	C	M12X1.75	45	0.4310	0.2740	0.1100	0.4918	1.6900	0.7070	0.9040	WRKS30M	
WRK32621	30M-JIS / P-15-.7224(C.156)	C	M12X1.75	15	0.4720	0.3130	0.1560	0.4918	1.6930	0.7224	0.9194	WRKS30M	
BT-35													
TOOL SHANK BT-35													
WRK31111	35M-BT / PT-45-.884	C	M12X1.75	45	0.5100	0.3320	N/A	0.5114	1.8870	0.8840	1.1000	N/A	
WRK31111A	35M-BT / PT-60-.884	C	M12X1.75	60	0.5100	0.3330	N/A	0.5114	1.8870	0.8840	1.1000	N/A	
WRK32328	35M-BT / PT-45-.634	C	M12X1.75	45	0.4080	0.3130	N/A	0.5111	1.4170	0.6340	0.7870	WRKS30D	
WRK32611	35M-BT / PT-45-.884	C	M12X1.75	45	0.5380	0.3480	N/A	0.5105	2.0900	0.8840	1.1000	N/A	
WRK32613	35M-BT / PT-90-.7067	C	M12X1.75	90	0.5490	0.3130	N/A	0.4918	1.7700	0.7067	0.9040	N/A	
WRK32614	35M-BT / PT-60-.884	C	M12X1.75	60	0.5380	0.3480	N/A	0.4918	2.0870	0.8840	1.1000	N/A	
BT-40													
TOOL SHANK BT-40													
WRK11126	40M-BT / A-45-.552	H	M16X2.00	45	0.7400	0.4900	N/A	0.6689	1.6120	0.5520	0.7520	WRKS40	
WRK11126A	40M-BT / A-45-.552(C.281)	H	M16X2.00	45	0.7400	0.4900	0.281	0.6689	1.7360	0.5520	0.7520	WRKS40	
WRK17126	40M-BT / PT-45-1.251	C	M16X2.00	45	0.5920	0.4040	N/A	0.6689	2.5340	1.2510	1.5500	WRKS40M	
WRK17127	40M-BT / PT-45-1.251(C.141)	C	M16X2.00	45	0.5920	0.4040	0.141	0.6689	2.5340	1.2510	1.5500	WRKS40M	
WRK31113	40M-BT / PT-45-1.100	C	M16X2.00	45	0.5890	0.3920	N/A	0.6690	2.3600	1.1000	1.3760	WRKS40	
WRK31113A	40M-BT / PT-60-1.100	C	M16X2.00	60	0.5890	0.3920	N/A	0.6690	2.3600	1.1000	1.3760	WRKSS40	
WRK31113B	40M-BT / PT-90-1.100	C	M16X2.00	90	0.5890	0.3920	N/A	0.6690	2.3600	1.1000	1.3760	WRKS40	
WRK31113D	40M-BT / PT-45-1.100(C.197)	C	M16X2.00	45	0.5890	0.3920	0.197	0.6690	2.3600	1.1000	1.3760	WRKS40	
WRK31113E	40M-BT / PT-60-1.100(C.197)	C	M16X2.00	60	0.5890	0.3920	0.197	0.6690	2.3600	1.1000	1.3760	WRKS40	
WRK31113F	40M-BT / PT-90-1.100(C.197)	C	M16X2.00	90	0.5890	0.3920	0.197	0.6690	2.3600	1.1000	1.3760	WRKS40	
WRK32912	40M-BT / I(A)-15-.9035	I	M16X2.00	15	0.7460	0.5490	N/A	0.6690	2.1260	0.9035	1.1397	WRKS40	
WRK32913	40M-BT / I(A)-15-.9035(C.281)	I	M16X2.00	15	0.7460	0.5490	0.281	0.6690	2.1260	0.9035	1.1397	WRKS40	
BT-45													
TOOL SHANK BT-45													
WRK31115	45M-BT / PT-45-1.218	C	M20X2.50	45	0.7460	0.5490	N/A	0.8264	2.7560	1.2180	1.5730	WRKS45M	
WRK31115A	45M-BT / PT-60-1.218	C	M20X2.50	60	0.7460	0.5490	N/A	0.8264	2.7560	1.2180	1.5730	WRKS45M	
WRK31115B	45M-BT / PT-90-1.218	C	M20X2.50	90	0.7460	0.5490	N/A	0.8264	2.7560	1.2180	1.5730	WRKS45M	

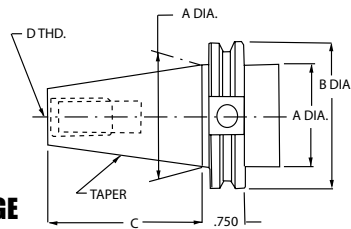


BT FLANGE RETENTION KNOBS

EXPANDED



GW NO.	SMART DESCRIPTION	STYLE	T	A	D1	D2	D3	D4	L	L1	L2	SOCKET
TOOL SHANK BT-50												
WRK11144A	50M-A / A-45-.700(C.468)	H	M24X3.00	45	1.1400	0.8200	0.4680	0.9839	2.5800	0.7000	1.0000	WRKS50
WRK11148	50M-A-P / A-45-.700	H	M24X3.00	45	1.1400	0.8200	N/A	0.9839	2.5800	0.7000	1.0000	WRKS50
WRK11148A	50M-A-P / A-45-.700(C.468)	H	M24X3.00	45	1.1400	0.8200	0.4680	0.9839	2.5800	0.7000	1.0000	WRKS50
WRK31117	50M-BT / PT-45-1.376	C	M24X3.00	45	0.9030	0.6680	N/A	0.9839	3.3500	1.3760	1.7700	WRKS50M
WRK31117A	50M-BT / PT-60-1.376	C	M24X3.00	60	0.9030	0.6680	N/A	0.9839	3.3500	1.3760	1.7700	WRKS50M
WRK31117B	50M-BT / PT-90-1.376	C	M24X3.00	90	0.9030	0.6680	N/A	0.9839	3.3500	1.3760	1.7700	WRKS50M
WRK31246A	50M-A / A-45-.700(C.390)-OF	H	M24X3.00	45	1.1400	0.8200	0.3900	0.9839	2.5800	0.7000	1.0000	WRKS50M
WRK31643	50M-BT / PT-45-1.376(C.236)	C	M24X3.00	45	0.9030	0.6680	0.2360	0.9839	3.3500	1.3760	1.7700	WRKS50M
WRK31652	50M-I-O / PT-45-1.384(C.236)	C	M24X3.00	45	0.9030	0.6680	0.2360	0.9839	3.3500	1.3840	1.7780	WRKS50M
WRK31843	50M-BT / PT-60-1.376(C.312)	C	M24X3.00	60	0.9030	0.6680	0.3120	0.9839	3.3500	1.3760	1.7700	WRKS50M
WRK34217B	50M-BT / PT-90-1.376(C.250)	C	M24X3.00	90	0.9030	0.6680	0.2500	0.9839	3.3500	1.3760	1.7700	WRKS50M



DIN / ISO FLANGE

DIN / ISO FLANGE SHANK DIMENSIONS

TAPER	A	B	C	D
30	1.250	1.967	1.876	M12 X 1.75
40	1.750	2.500	2.687	M16 X 2.00
45	2.250	3.248	3.250	M20 X 2.50
50	2.750	3.837	4.000	M24 X 3.00

GW NO.	DESCRIPTION	STYLE	T	A	D1	D2	D3	D4	L	L1	L2	SOCKET
TOOL SHANK 40												
WRK11122A	40M-BT (I) / A-45-.440(C.281)	H	M16X2.00	45	0.7400	0.4900	0.2810	0.6689	1.6240	0.4400	0.6400	WRKS40
WRK11125	40M-A (I) / A-45-.440	H	M16X2.00	45	0.7400	0.4900	N/A	0.6689	1.6240	0.4400	0.6400	WRKS40
WRK35000V	40M-BT(I) / PT-45-.988	C	M16X2.00	45	0.5890	0.3920	N/A	0.6689	2.3660	0.9880	1.2640	WRKS40
WRK35026	40M-BT(I) / PT-60-.988	C	M16X2.00	60	0.5890	0.3920	N/A	0.6689	2.3660	0.9880	1.2640	WRKS40
WRK35038	40M-BT(I) / PT-90-.988	C	M16X2.00	90	0.5890	0.3920	N/A	0.6689	2.3660	0.9880	1.2640	WRKS40
WRK51022	40M-I (I) / I(A)-15-.787(C.236)	I	M16X2.00	15	0.7460	0.5490	0.2360	0.6690	2.1250	0.7874	1.0245	WRKS40
WRK51024	40M-I / I(B)-45-.433	H	M16X2.00	15	0.7460	0.5490	N/A	0.6690	2.1250	0.7874	1.0245	WRKS40
WRK51026	40M-I (I) / I(A)-15-.787	I	M16X2.00	15	0.7460	0.5490	N/A	0.6690	2.1250	0.7874	1.0245	WRKS40
WRK71122	40M-D / D(A)-15-.787(C.236)	F	M16X2.00	15	0.7468	0.5492	0.2360	0.6682	2.1360	0.7870	1.0236	WRKS40
WRK71124	40M-D / D(A)-15-.787	F	M16X2.00	15	0.7468	0.5492	N/A	0.6680	2.1360	0.7870	1.0236	WRKS40
TOOL SHANK 45												
WRK51033	45M-I / I(A)-15-.906(C.375)	I	M20X2.50	15	0.9036	0.6673	0.3750	0.8265	2.5590	0.9055	1.1811	WRKS45
WRK51037	45M-I / I(A)-15-.906	I	M20X2.50	15	0.9036	0.6673	N/A	0.8265	2.5590	0.9055	1.1811	WRKS45
TOOL SHANK 50												
WRK35048B	50M-I / PT-90-1.384	C	M24X3.00	90	0.9030	0.6680	N/A	0.9830	3.3530	1.3840	1.7780	WRK50S
WRK71144	50M-D / D(A)-15-.984(C.468)	F	M24X3.00	15	1.1010	0.8250	0.4680	0.9830	2.9200	0.9840	1.3380	WRKS50M
WRK71146	50M-D / D(A)-15-.984	F	M24X3.00	15	1.1010	0.8250	N/A	0.9830	2.9200	0.9840	1.3380	WRKS50M

ACCESSORIES